

**Blake Ward**  
*Resonant Space*











Canadian born sculptor Blake Ward spends several months crafting single edition sculptures from his studio in Monaco. After studying in Paris and taking cues from classical European sculptural traditions, Blake began his practice sculpting realistic figures out of marble. Years later Blake's visual language has evolved, offering a vision for sculpture never seen before. Using the human body as a platform, his sculptures philosophically implore paradoxical aspects of human nature and the soul.

Blake examines the nature of bodily description through these pieces. The opposing dynamic forces that make up a person's being is represented by the two halves of the sculpture. A body can theoretically be subdivided into an infinite number of elements down to the last synapse. The organic unification and cooperation of these infinite elements in creating a sentient being is one of life's great mysteries.

The intertwining series of rods that hold two halves together, in what appears to be a fragile, delicate balancing act. In reality the balancing act is not so precarious; the elements when brought together make a solid, stable whole and are incredibly resilient. The figures, though made out of thirty kilograms of bronze, appear weightless as they leap off of their marble plinths. This tension between elements is another recurring theme brought out in the work by leaving the viewer uncertain if the two halves are in the process of separating or uniting. Clothing is absent, revealing the naked form, which then gives way to illuminate the inside. Blake here is perhaps alluding to the nature of the true self, which, when the ego is stripped away, radiates from within, laid out for all to see.

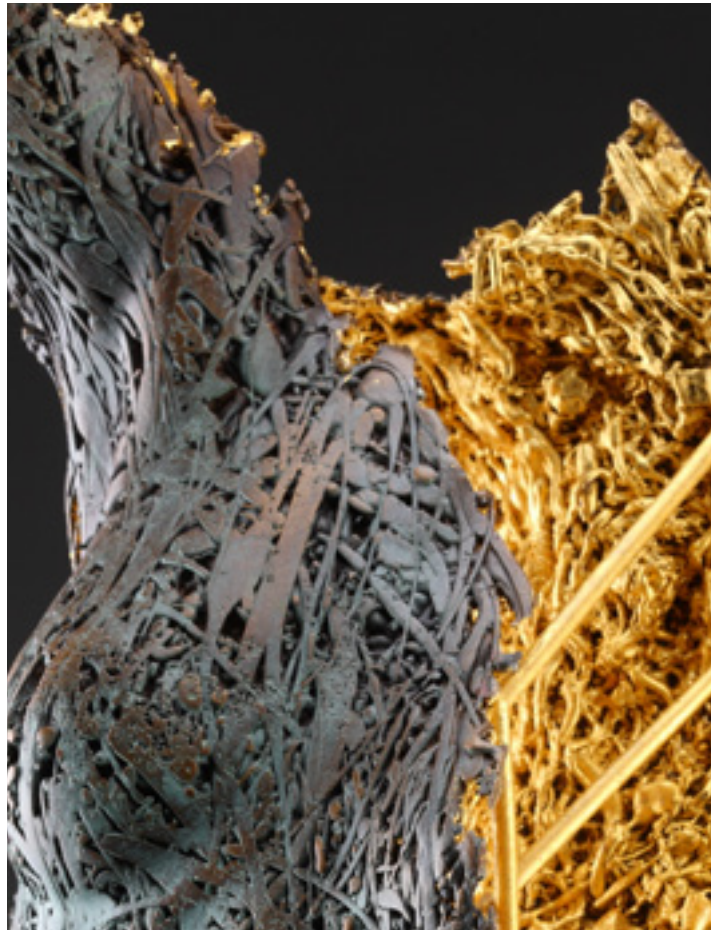
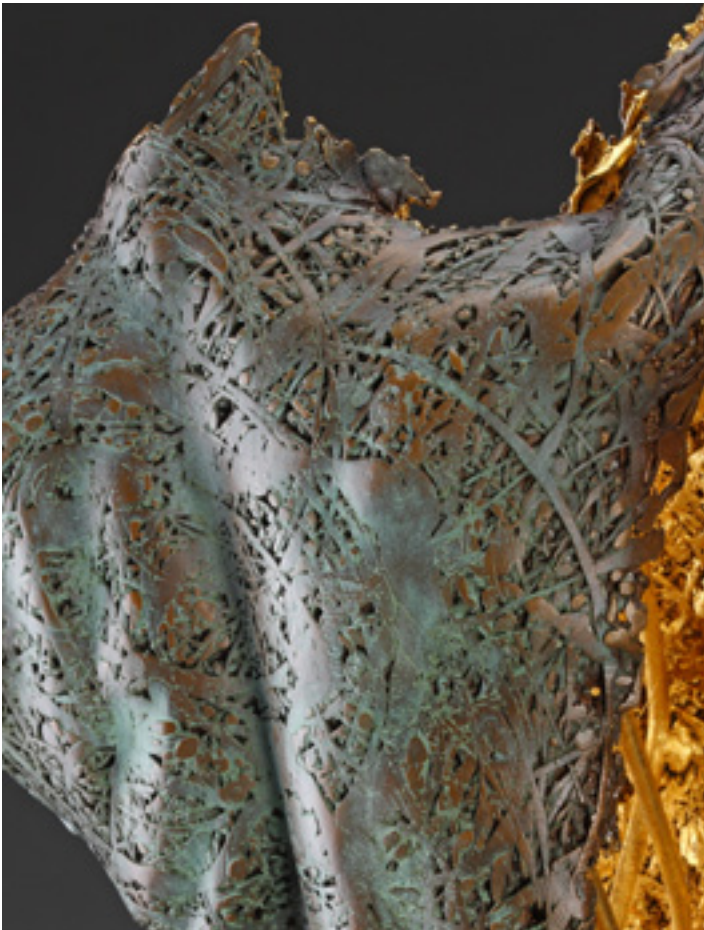
Blake begins his process by carving a clay statue from a live model. The wax mouldings are then sent to Bologna, Italy and cast in Bronze via the lost wax casting process at the foundry Venturi Arte.

Blake has a fast-growing international reputation as an important living figurative sculpture as a result of his unique and contemporary use of European figurative tradition. Blake's limited edition sculptures in bronze and marble are included in several important international collections including the Jacques Ginepro bronze sculpture collection in France and the personal collection of Prince Albert.



Phantom Gold Sky, 2012  
Bronze and 24K Gold Unique  
36" x 6.5" x 14" (91 x 17 x 36 cm)









Phantom Chandra 2013  
Bronze with 24K Gold  
Unique  
43" x 7.5" x 14" (110 x 19 x 36 cm)









Angel Valoel 2013  
Bronze  
Unique  
20" x 7.5" x 8" (51 x 19 x 21 cm)









Angel Chamuel 2013  
Bronze Unique  
35.5" x 15" x 11" (90 x 38 x 28 cm)









Angel Camael 2013  
Bronze Unique  
25.5" x 9.5" x 12" (65 x 24 x 31 cm)









Angel Aymelek 2013  
Bronze Unique  
19.5" x 9" x 8.5" (50 x 23 x 22 cm)



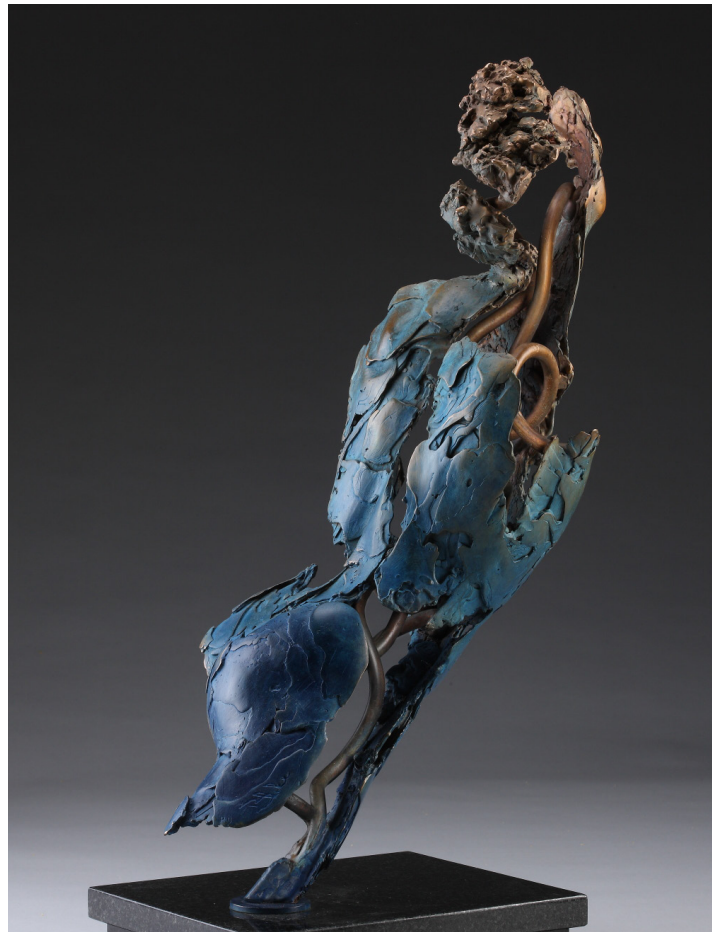






Angel Ambriel 2013  
Bronze  
Unique  
21" x 7" x 12.5" (53 x 18 x 32 cm)







**iantangallery**  
vancouver hong kong

2202 GRANVILLE ST  
VANCOUVER BC V6H 4H7  
604 738 1077 IANTANGALLERY.COM